





PRINTING THE FUTURE




800,000 +
PARTS PRODUCED

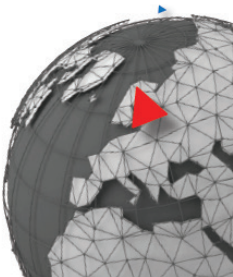

10+
COMBINED YEARS OF
EXPERIENCE IN AM


30+
MACHINES IN-HOUSE


5,000+
CUSTOMERS SERVED



- > In-house capabilities of Metal and polymer printing
- > Access to a wide range of Technologies
- > Qualified Many parts tailored for AM
- > Partnership with Technological leaders of AM
- > Experience with broad industry domains
- > On- Demand Manufacturing



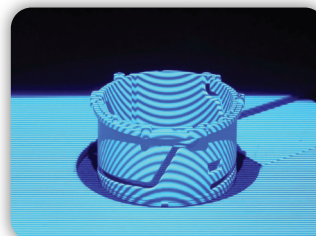
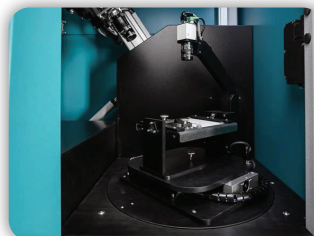
Service 'ONE' Stop Solution



Reverse Engineering Tools

Optical 3D metrology system

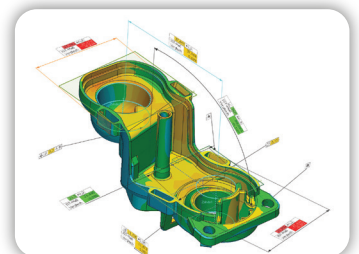
- Blue Light Projection
- Up to 4 Moveable Axis



- Camera resolution up to 12 million px
- Photogrammetric image referencing with smart camera

Dimensional Inspection

- Direct comparison to CAD
- Fully automatic & Parametric test job creation



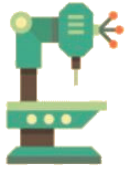


- ALU ALLOYS (ALSi10MG)
- STEEL ALLOYS (316L SS, MS1)
- NICKEL ALLOYS (IN625/718)
- TITANIUM (Ti64ELI)

MATERIALS

POST PROCESSING

- HEAT TREATMENT
- POST MACHINING
- POLISHING
- ELECTROPLATING



- 250 X 250 X 320MM
- 400 X 400 X 400MM

BUILD VOLUMES

POLYMERS



- 340 X 340 X 600MM
- 380 X 280 X 380MM
- 300 X 300 X 600MM
- 650 X 650 X 950MM

MATERIALS

BUILD VOLUMES

- NYLON PA 12, PA2200
- ABS LIKE RESINS, WHITE RESINS
- PA6-CF,GF,NYLON,PC,ABS ESD
- ULTEM,PEEK,PEKK



POST PROCESSING

- SPRAY PAINTING / COLOR DYE
- SMOOTH SANDING
- TUMBLING
- ELECTROPLATING



ON-DEMAND PRINTING &
POST PROCESSING

WHY CHOOSE ELH AM? >>>>



In-house capabilities
of Polymer and Metal
systems



Access to a wide
range of technologies



Partnership with major
technological leaders of
additive technologies



Qualified many parts
tailored for AM



Experience with broad
industry domains

OUR VALUABLE CLIENTS



Agilent
Technologies

APPLIED
MATERIALS®
make possible

DSO
NATIONAL
LABORATORIES



GE Aviation



AIRBUS



ST Engineering
Aerospace



FLOWSERVE



thyssenkrupp



sembcorp
marine



#03-07 Lobby 1, JTC Space@Tampines North Singapore 528553



sales.elh@elhtech.com.sg



www.Elh3d.com



+65 8139 8758
+65 8125 7838